

WCI Authentication

Interactions between tiers during authentication with servlet 2.5 API
& servlet 3.0 API

Alain Defrance (eXo platform)

Two types of authentication

- Servlet 2.5 API

- Simulation of programmatic authentication.
- Use a set of redirect.

- Servlet 3.0 API

- Use programmatic authentication provided by servlet 3.0 API.

Supported Servers

- Using servlet 2.5 API

- Tomcat 6.x
- Jetty 6.x
- JBoss as 4.2
- JBoss as 5.1

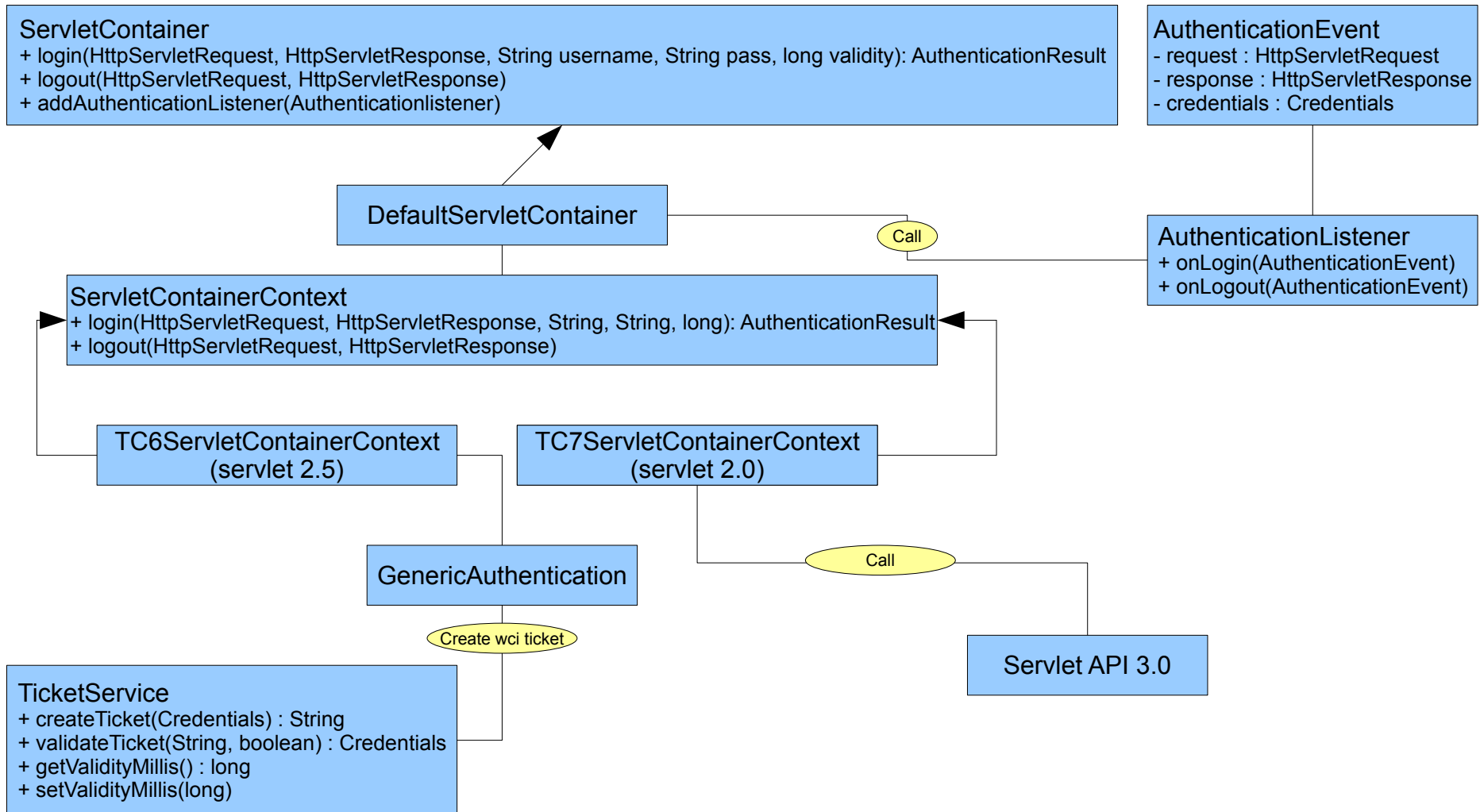
- Using servlet 3.0 API

- Tomcat 7.x
- JBoss as 6.0

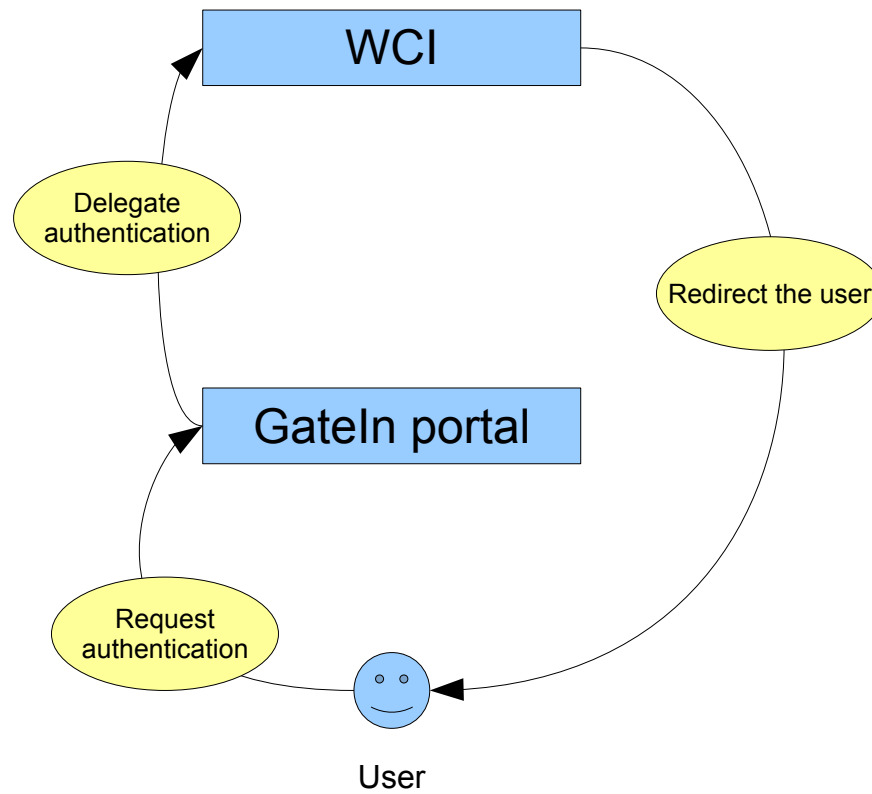
WCI Authentication components

- Can Authenticate through JAAS
- Produce an AuthenticationResult instance
- Have authentication lifecycle listeners
- Have a JAAS LoginModule (WCILoginModule)
- Have a Servlet (WCILoginController)

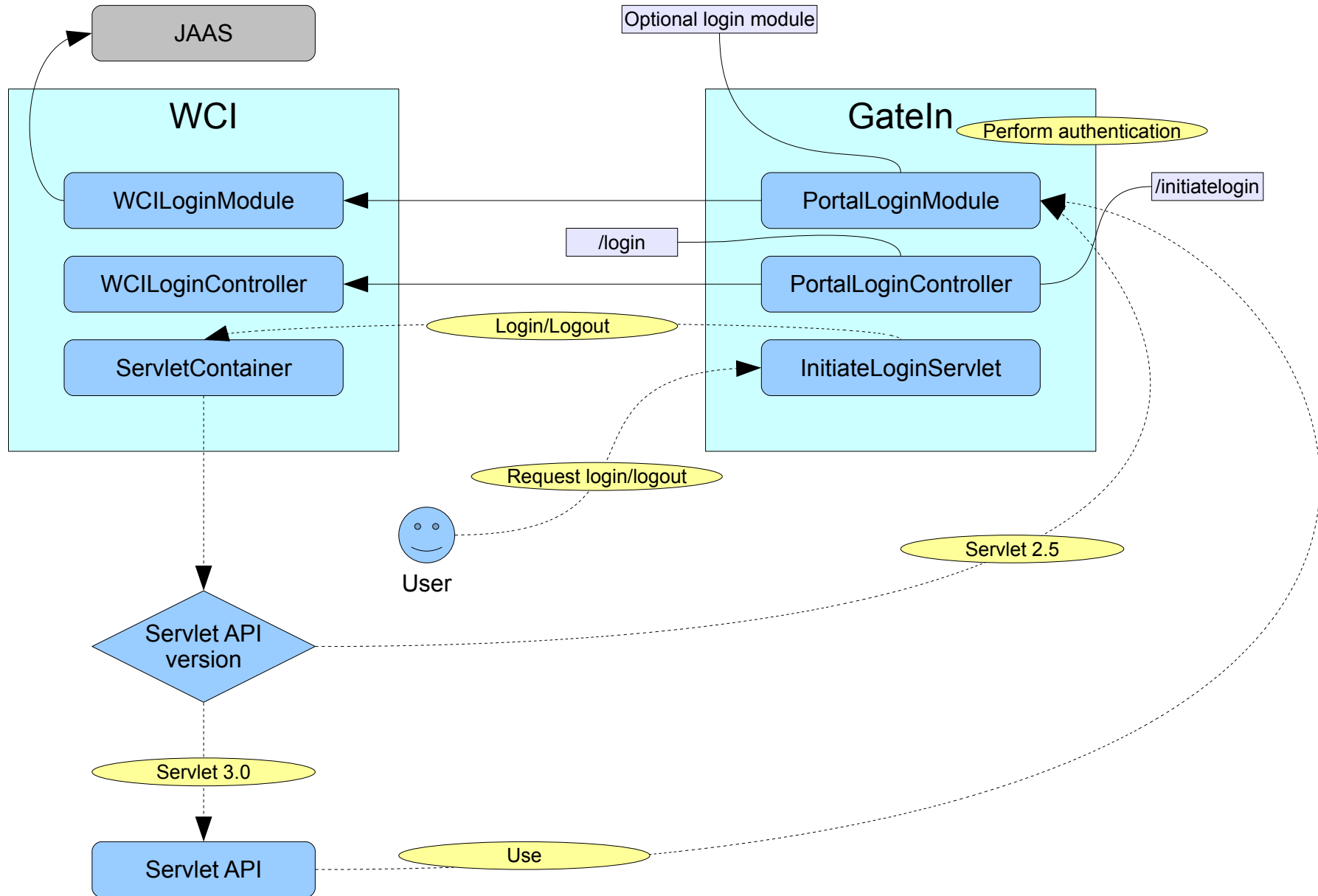
WCI Authentication API (tomcat)



WCI Authentication and GateIn

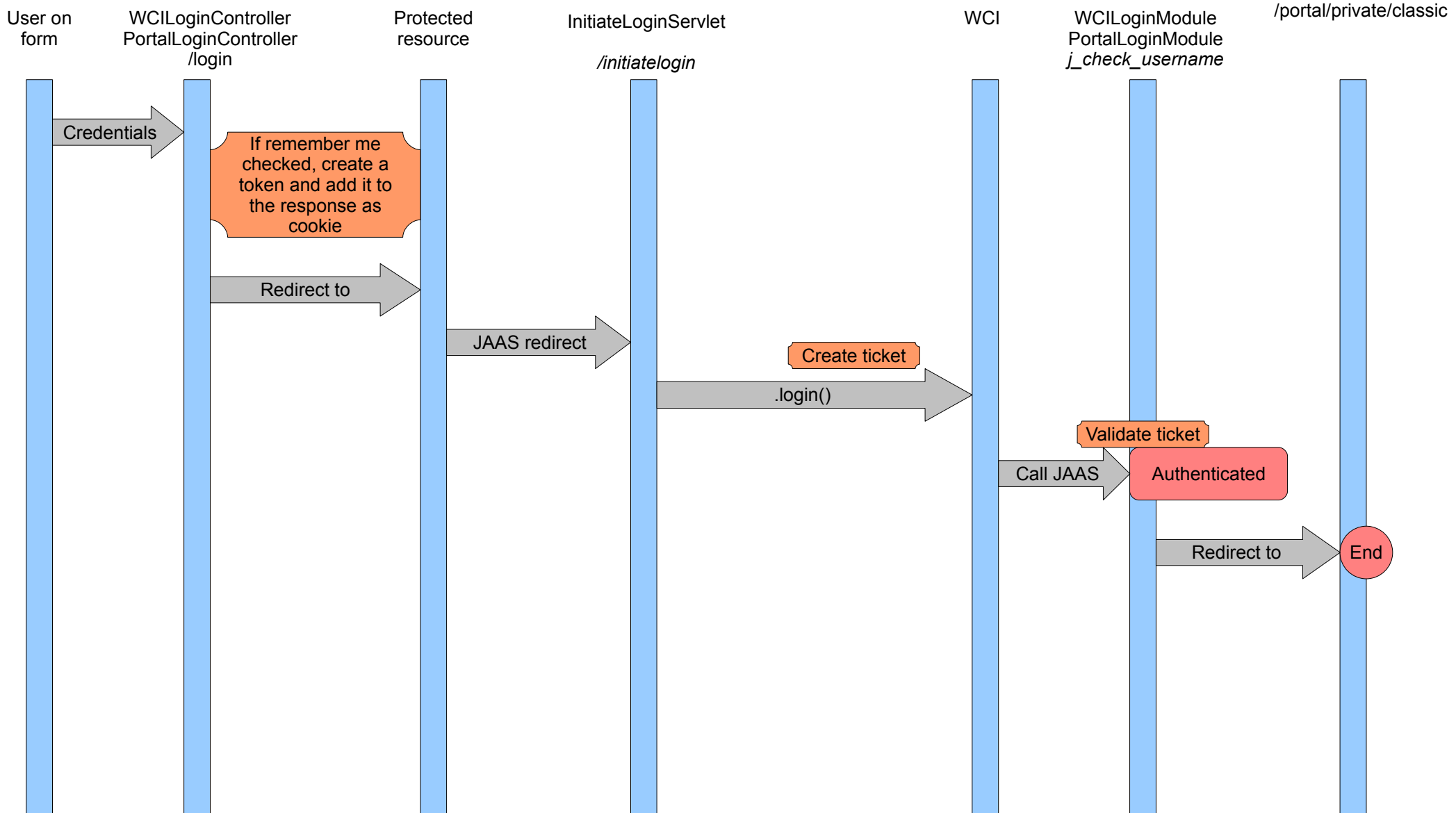


GateIn Authentication



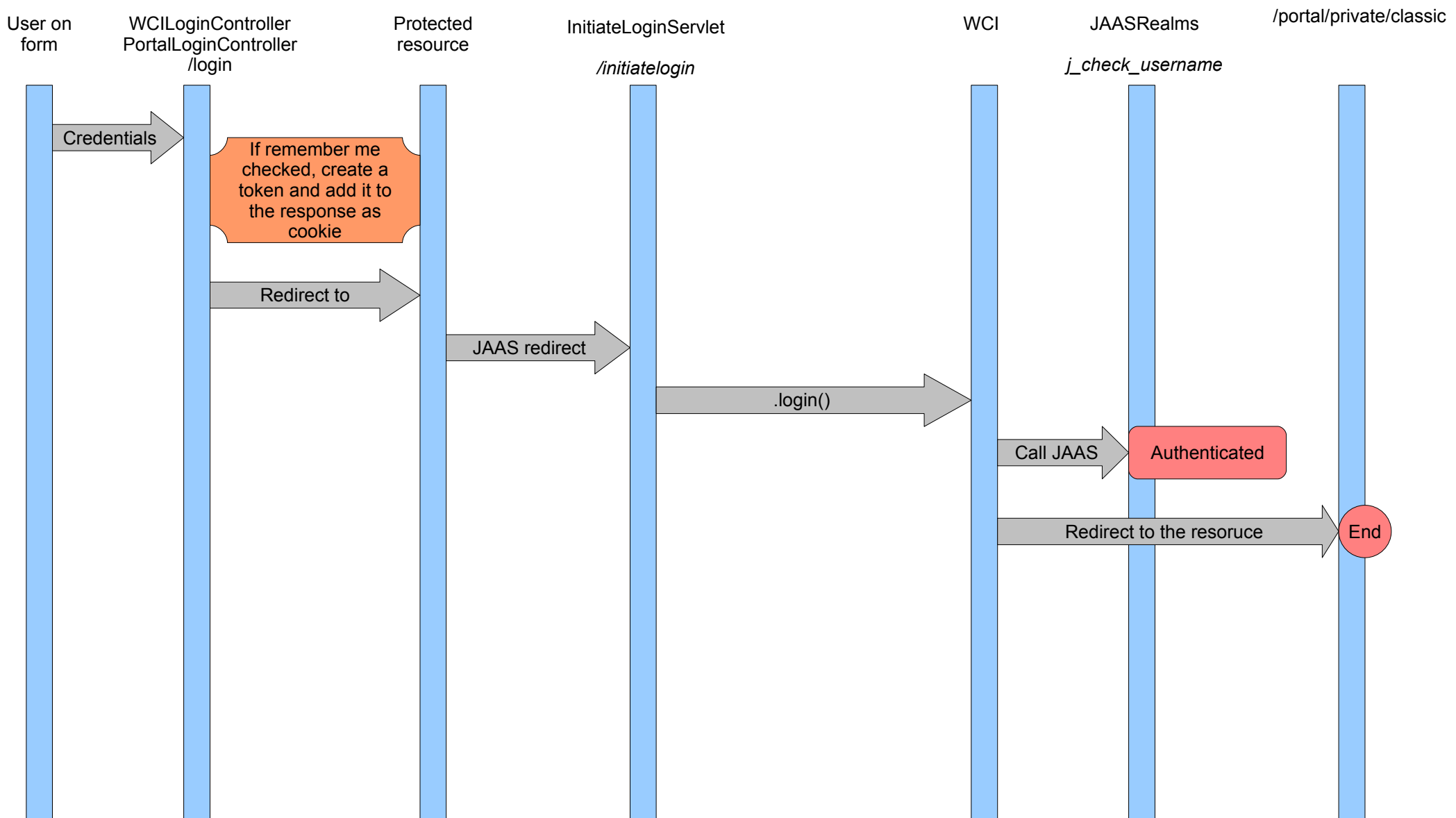
Authentication with Form

This use case addresses when the end user fills in a form and submits it with a click to trigger authentication



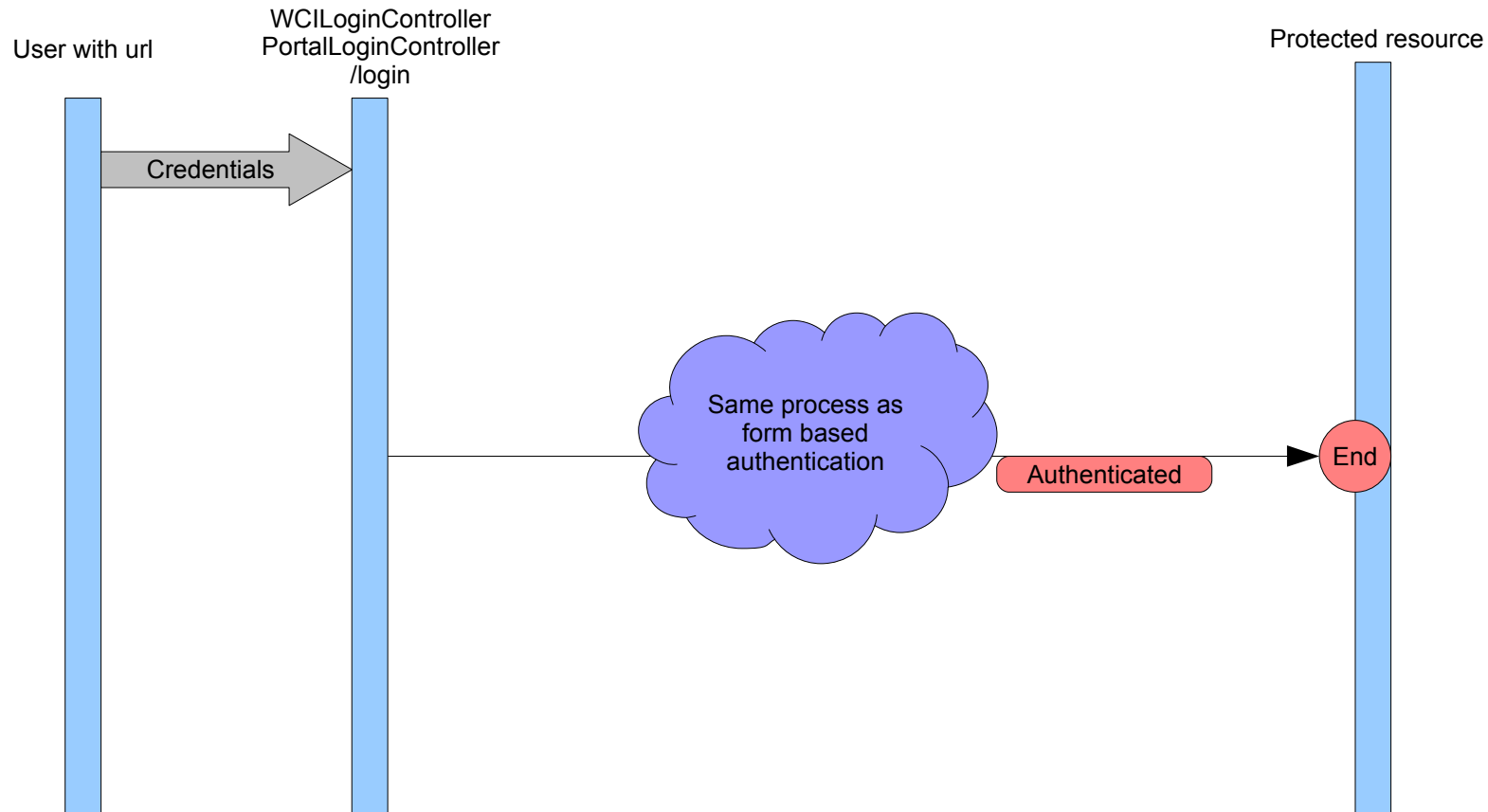
Authentication with Form

This use case addresses when the end user fills in a form and submits it with a click to trigger authentication



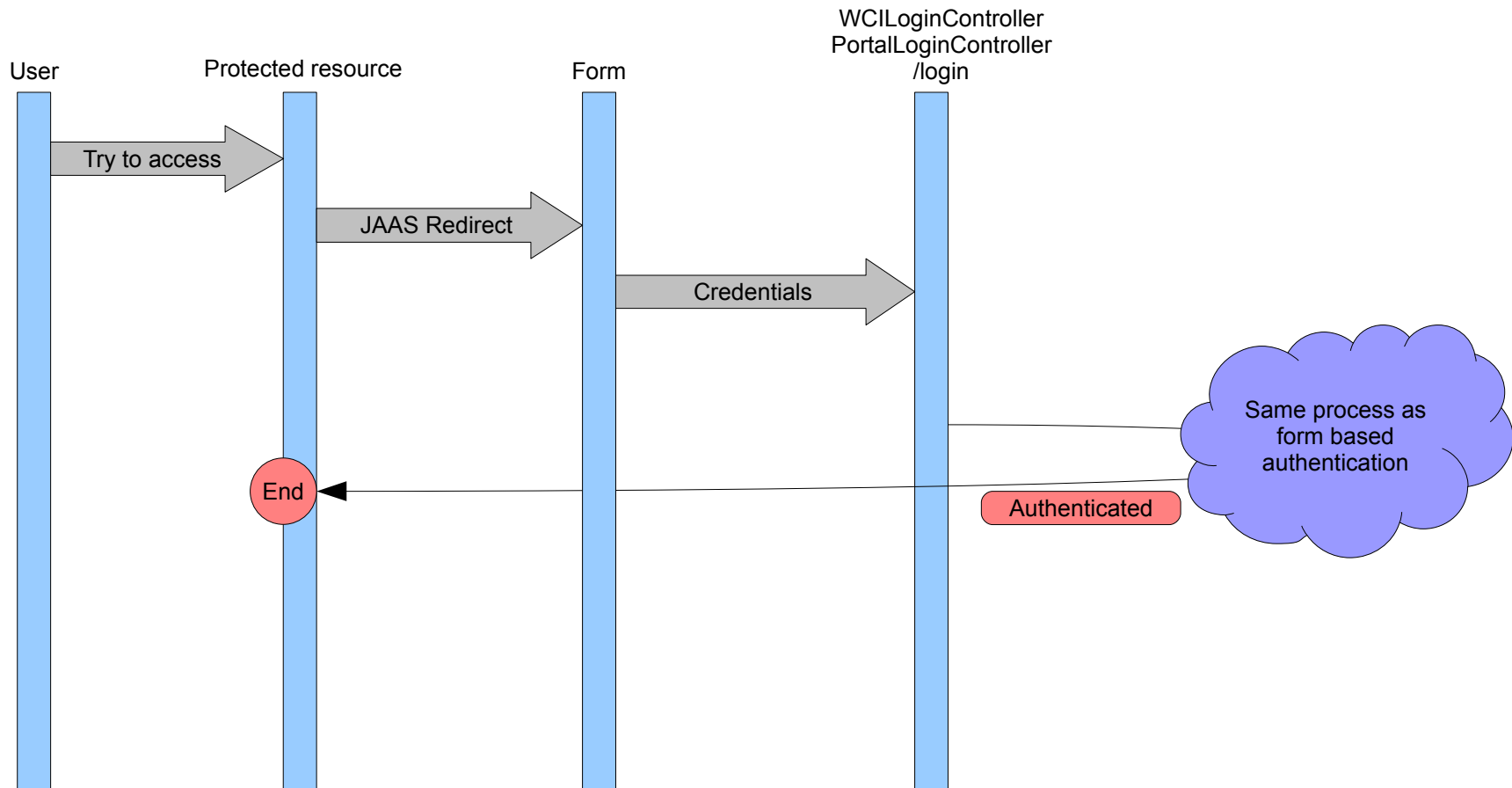
Authentication with URL

This use case addresses when the end user access to an url like : /login?username=foo&password=bar



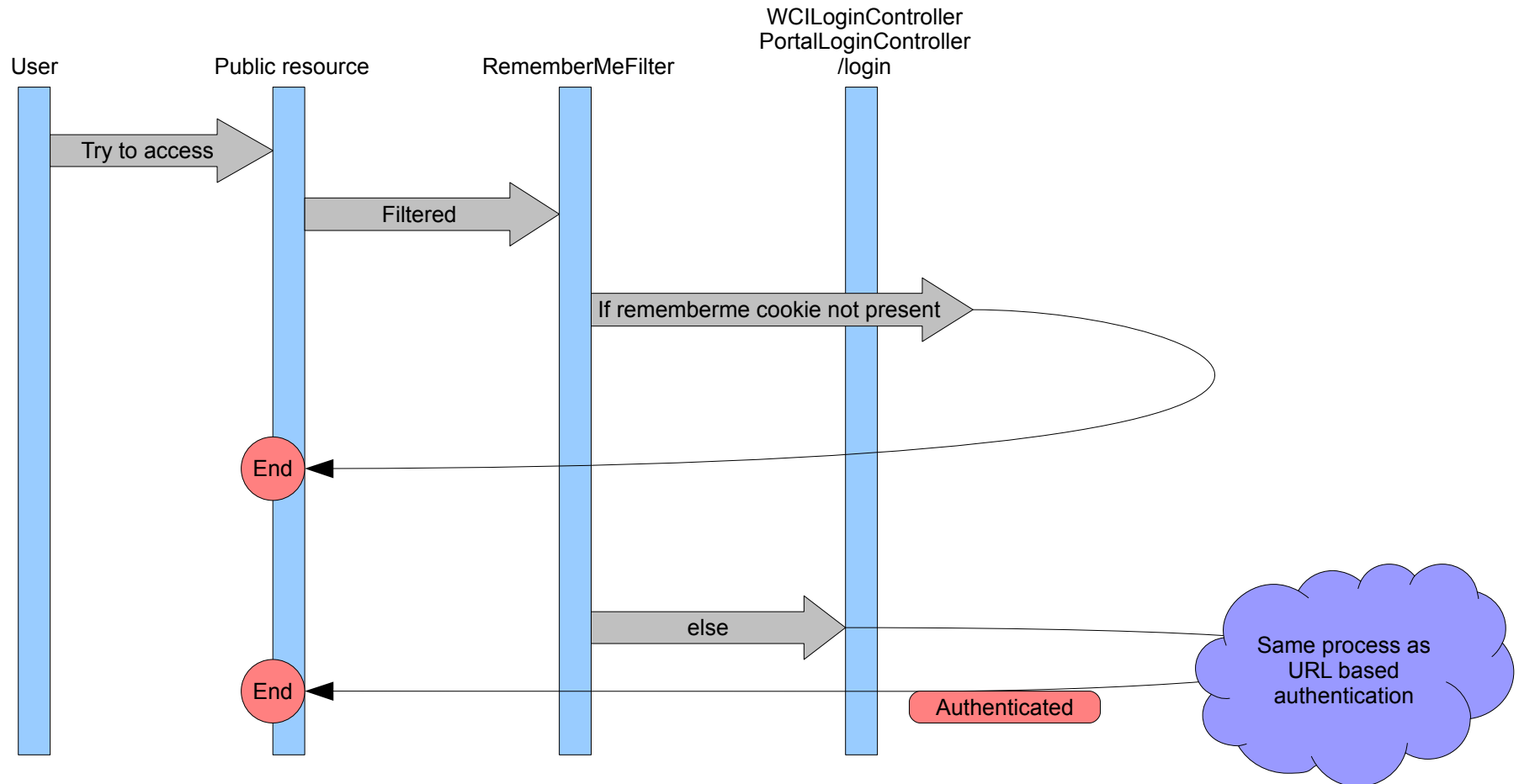
Authentication with protected resource

This use case addresses when the end user try to access to a protected resource



Authentication with remember me cookie

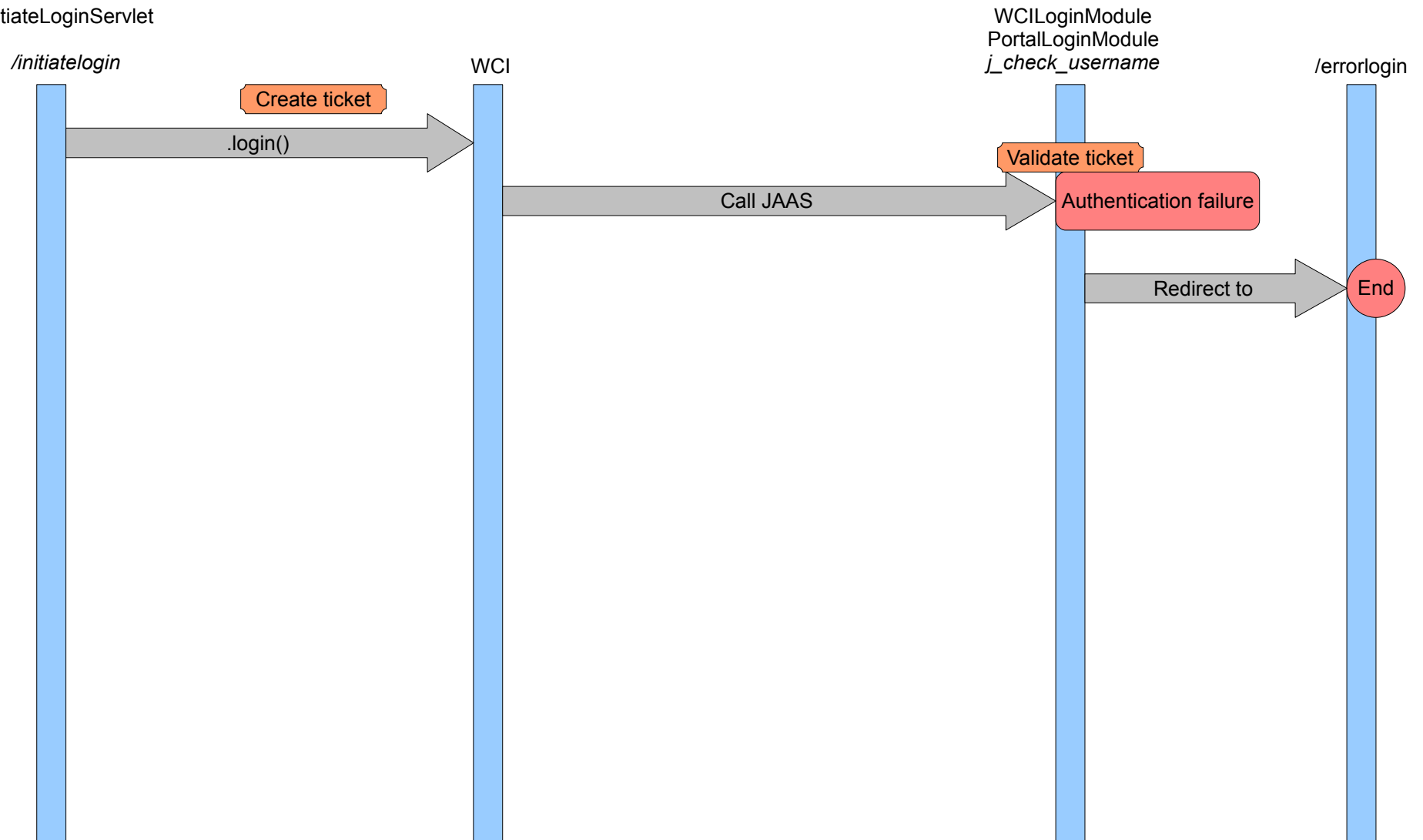
This use case addresses when the end user comes to a public resource and the client has a remember me cookie



Authentication failure

This use case addresses when the end user fills wrong login or password

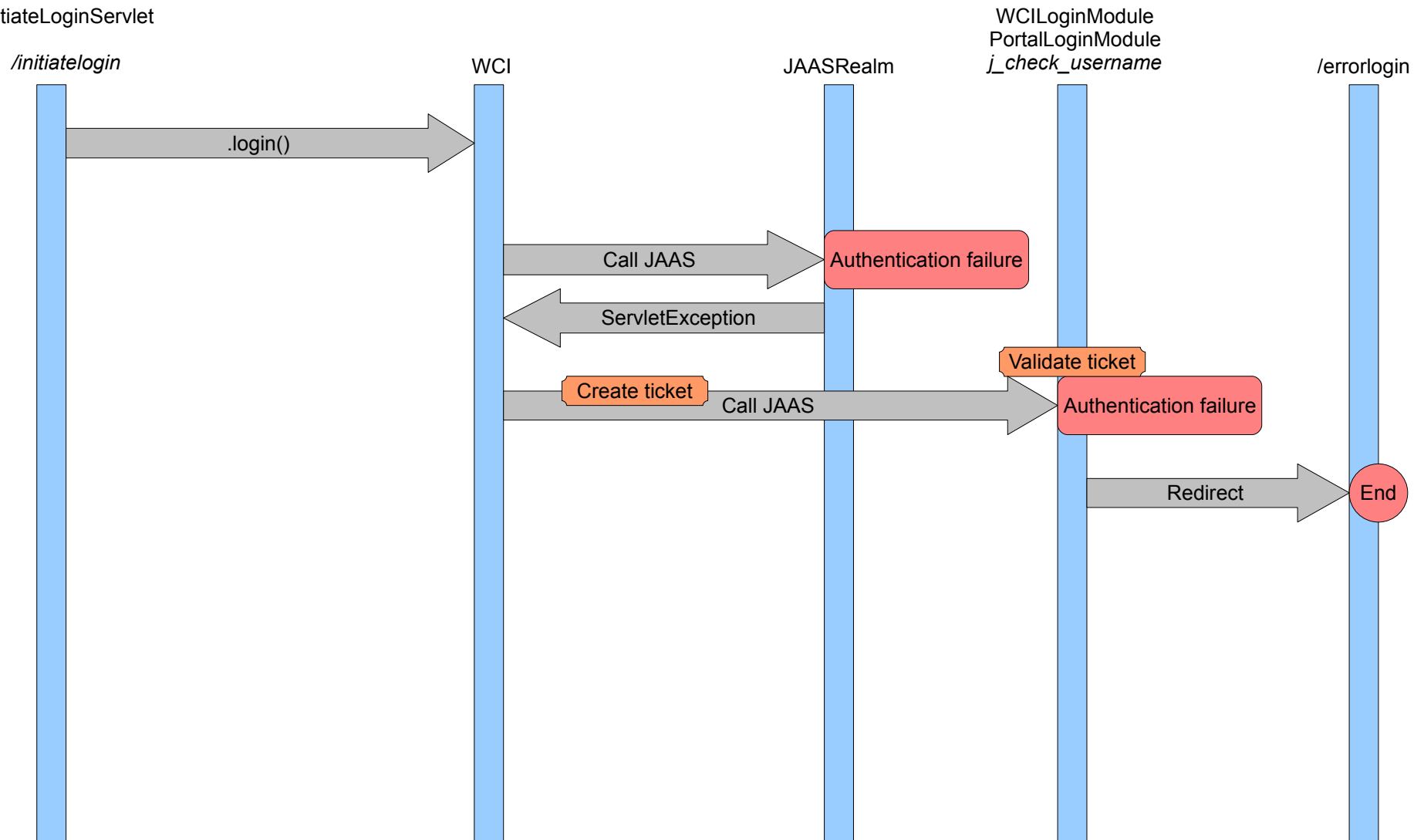
InitiateLoginServlet



Authentication failure

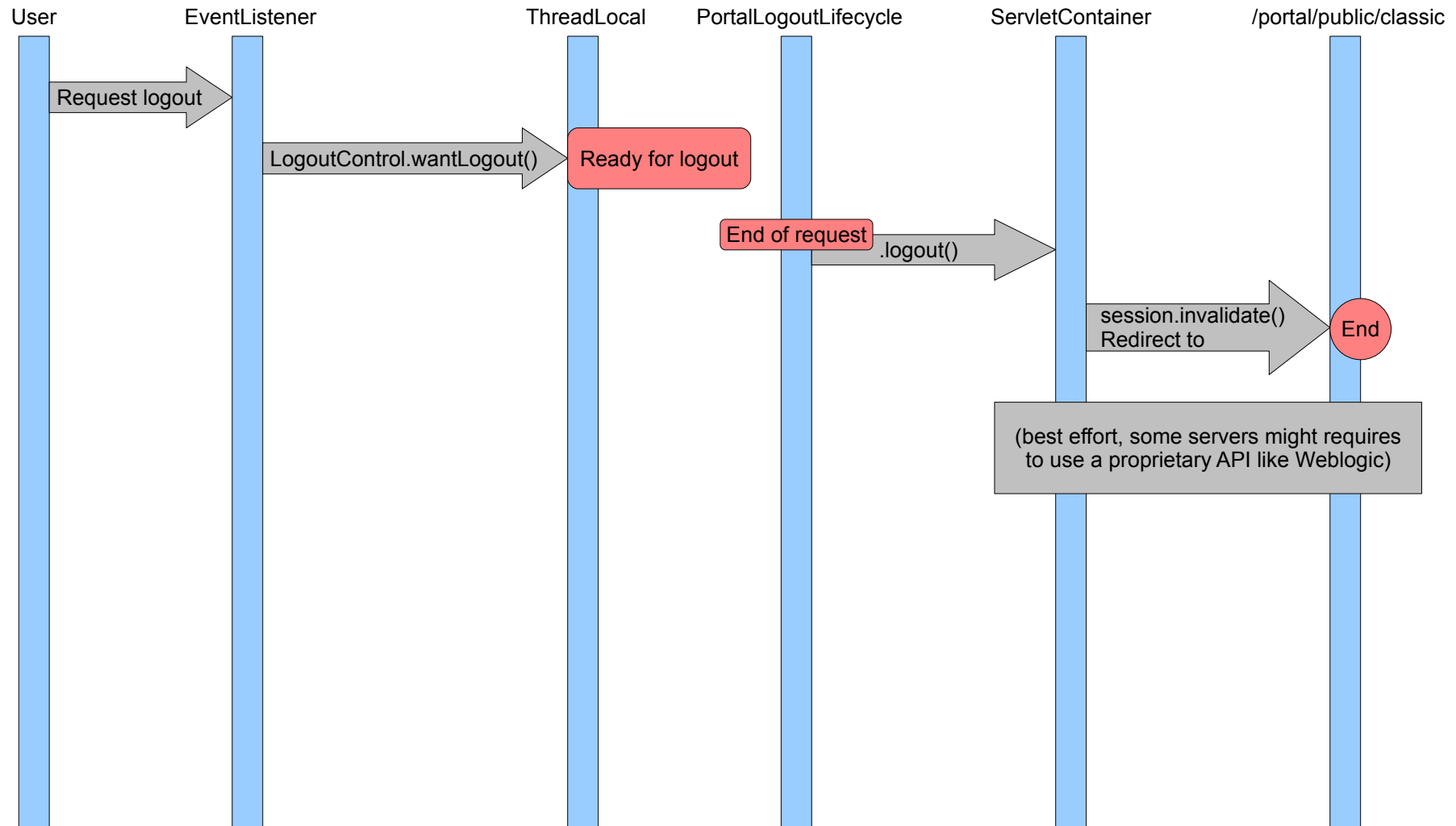
This use case addresses when the end user fills wrong login or password

InitiateLoginServlet



Authentication logout

This use case addresses when the end user click on logout



Authentication logout

This use case addresses when the end user click on logout

